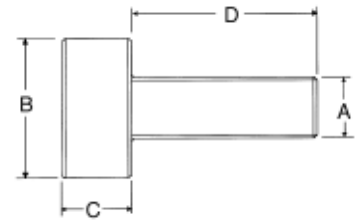


## Brass Knurled Head Thumb Screws

- ▶ Free machining brass
- ▶ Diamond knurl
- ▶ Precision machined finish



PART #	Thread	D	B	C
5160	#4-40	.312	.312	.187
5161	#4-40	.375	.312	.187
5162	#6-32	.375	.312	.187
5163	#6-32	.500	.312	.187
5164	#8-32	.375	.375	.187#
5165	#8-32	.500	.375	.187
5166	#10-24	.500	.375	.187
5167	#10-24	.625	.375	.187
5168	#10-32	.500	.375	.187
5169	#10-32	.625	.375	.187
5170	1/4-20	.750	.500	.187
5171	1/4-20	1.000	.500	.187



## Brass Knurled Head Thumb Screws with shoulder

- ▶ Free machining brass
- ▶ Diamond knurl
- ▶ Precision machined finish
- ▶ Shoulder provides an excellent bearing surface



PART #	Thread	D	B	C	E	F
5180	#4-40	.250	.375	.250	.187	.094
5181	#4-40	.375	.375	.250	.187	.094
5182	#6-32	.437	.437	.375	.312	.094
5183	#6-32	.562	.437	.375	.312	.094
5184	#8-32	.375	.500	.375	.312	.094
5185	#8-32	.500	.500	.375	.312	.094
5186	#8-32	.625	.500	.375	.312	.094
5187	#10-32	.375	.500	.375	.312	.094
5188	#10-32	.500	.500	.375	.312	.094
5189	#10-32	.625	.500	.375	.312	.094
5190	1/4-20	.500	.625	.500	.437	.125
5191	1/4-20	.625	.625	.500	.437	.125
5192	1/4-20	.750	.625	.500	.437	.125

